

Deteriorated Bulkhead along Newtown Creek and Manhattan Ave.



Repaired Bulkhead & Promenade shown by way of a photo montage (prepared for Greenpoint 197-A Plan by the Greenpoint Monitor Museum).

While the 197-A plan is a guide for future development, upcoming construction projects are the key to fast track plan recommendations. A promenade on the Newtown Creek at the end of Manhattan Avenue is a plan recommendation that can become a reality through the Manhattan Avenue reconstruction project. Once a part of the original design, the promenade had been removed from the final design. In addition, Bishop's Crook Lampposts were originally designated for streets only between Calyer St. and Greenpoint Ave. and not the full length of the Avenue. Through calls to City Agencies and petitions containing photo collages illustrating the Promenade and lampposts, the Museum has made and is attempting to make these recommendations a reality. We received notification that the lampposts have been incorporated into the design throughout the length of the Avenue. We are awaiting final word on the status of the Promenade.



Manhattan Ave. looking from Ash St. toward Driggs Ave.

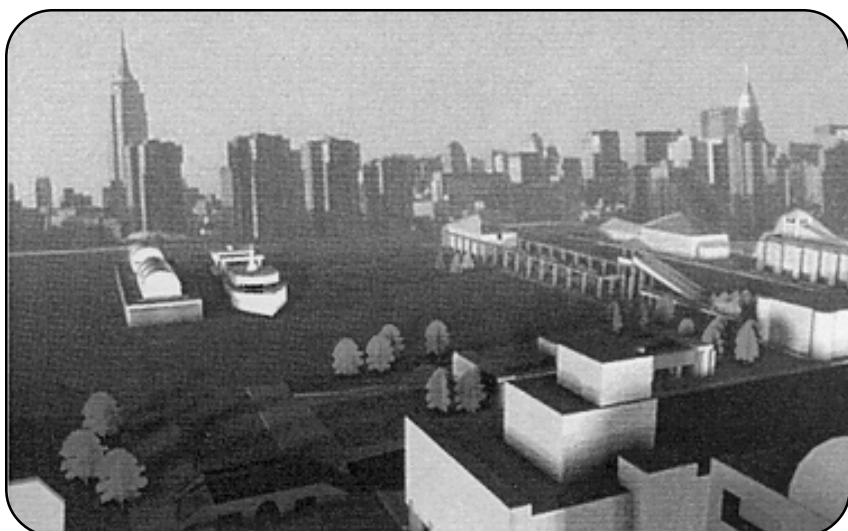


Views from the Lumber Exchange Terminal Pier.

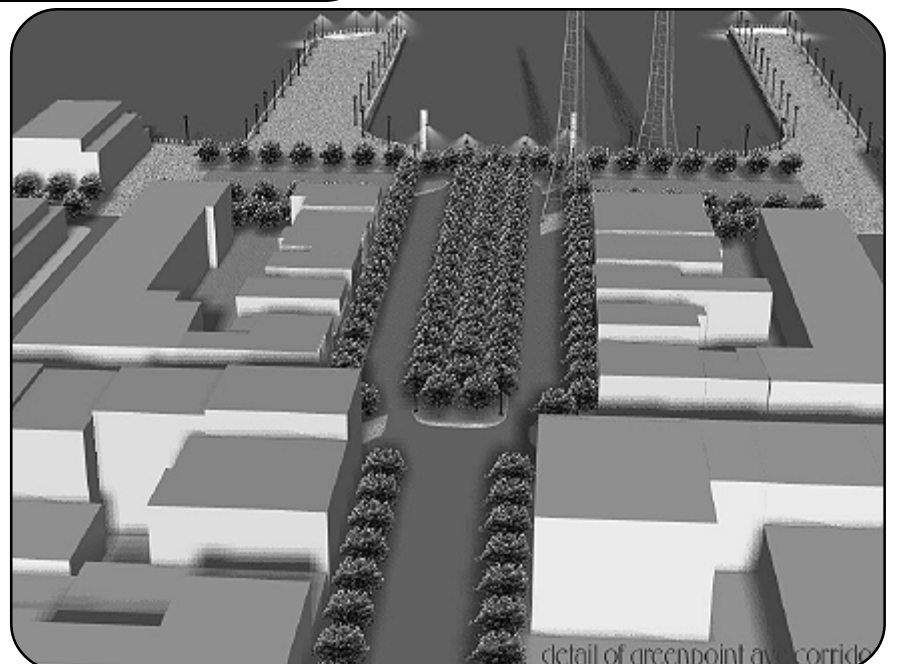


Lumber delivery at the Lumber Exchange Terminal

Cornell University Student ideas for a revitalized waterfront.



Piers, Marinas & Views of Manhattan



Greenpoint Ave. Greenway to the Waterfront